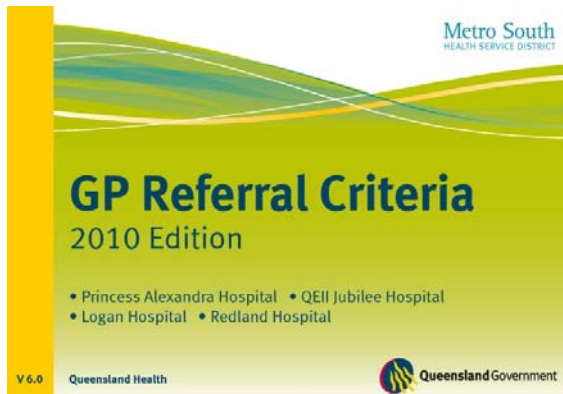




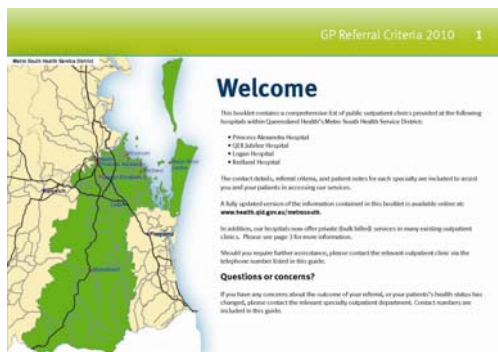
General Practitioners

GP Referral Criteria 2010 Edition



This booklet contains a comprehensive list of public outpatient clinics provided at the following hospitals within Queensland Health's Metro South Health Service District:

- Princess Alexandra Hospital
- QEII Jubilee Hospital
- Logan Hospital
- Redland Hospital



The contact details, referral criteria, and patient notes for each specialty are included to assist you and your patients in accessing our services.

A fully updated version of the information contained in this booklet is available online at:

<http://www.health.qld.gov.au/metrosouth>

also at

<http://www.sphn.org.au/general-practice-programs>

click on Resources – Downloadable Files – Under Q
QUEENSLAND HEALTH - GP REFERRAL CRITERIA

Falls and Falls Prevention: A Safety Net for GPs

This professional development course for GP's is running as a pre-conference workshop prior to the 2010 ESSA/SDA 2010 Conference – 'Research to Practice' – Science & Nutrition in Exercise & Sport www.essa.org.au/conference2010
Co-Presented by Prof Stephen Lord from the Prince of Wales Medical Research Institute.

Workshop includes information and tools on:

- An overview of falls in the elderly- insights and recommendations;
- Utilizing a multidisciplinary team; and whole-of-practice approach to reduce falls;
- Managing patients at risk of falling including quick tools to identify falls risks and polypharmacy triggers;
- Strategies to improve patient self-management, fostering self-care
- Community falls prevention programs including the usage of Exercise Physiologists
- **Date:** Thursday the 8th of April 2010
- **Venue:** Jupiters Casino on the Gold Coast.
- **Contact:** Laura Vidmar on 07 3856 5622 laura.vidmar@essa.org.au **RSVP** by 26 March
- **Accredited** with the RACGP for 40 CPD points.
- **Cost:** \$350 includes all meals

Minor Surgery for General Practitioners

A two-day workshop by The Skills Laboratory at the Royal Australasian College of Surgeons in Melbourne, to enhance the surgical skills required for minor surgical procedures most likely to be carried out by GPs in rural or remote settings

- **Date:** 1 & 2 May 2010.
- **Venue:** Skills Laboratory, Level 1 East Wing Skills & Education Centre, Royal Australasian College of Surgeons, Corner of Spring Street and Lonsdale Street, Melbourne
- RACGP QA&CPD Program: Total points: 40 (Category 1) The course is eligible for the Procedural Skills and Emergency Medicine grants.
- ACCRM Professional Development Program and has been allocated 24 Extended Skills points and 2 Core points
- **COURSE FEE:** Two-day course: \$900 + GST = \$990
- This fee includes lunch and light refreshments, course notes, and a copy of the general anatomy module of the AN@TOMEDIA™ cd-rom package.

enhancing health together





Dental Item numbers

It has come to the SouthEast Primary HealthCare Network's attention that dentists may be advising their patients that they are eligible for Medicare Benefits Schedule Item numbers 85011 – 87777 and to ask their GP for a *Current Chronic Disease Management Plan* or *Team Care Arrangement*.

- These MBS Schedule Item numbers are available for people with chronic medical conditions, complex care needs on *referral from a General Practitioner*.
- Dentists who believe they have a patient who could benefit from these item numbers and are not sure whether the patient has a *Current Chronic Disease Management Plan* or *Team Care Arrangement* can call Medicare Provider Hotline on 132 150.
- Dentists may want to call or write to the usual treating General Practitioner to enquire whether the patient's medical conditions warrant a management plan or team care arrangement.
- It is inappropriate for the referral pathway to work in reverse – ie dentists telling patients that they are eligible for these item numbers before general practitioner involvement.
- If your practice receives a call from a patient or dentist in relation to this matter, you may wish to refer the dentist to www.health.gov.au/internet/mbsonline/publishing.nsf/Content/Medicare-Benefits-Schedule-MBS-1 for the descriptors of this item number.
- For a proforma letter go to www.sphn.org.au/general-practice-programs click [Resources](#) then click on [GP Letter to Dentists](#)

General Practice Immunisation Incentive

The GPII scheme uses ACIR data to determine a child's immunisation status and provides GPII-registered practices with a coverage rate. A practice's coverage rates include all children who have attended the practice at least twice in a twelve month period. The child's visits do not have to be immunisation related. Coverage rates for practices are generated quarterly.

ACIR conducts the preliminary calculation for November to February quarter which occurs in the **last two weeks of February**. Practices will start to receive their coverage rate percentage and GPII020A reports during the **first week of March**. The GPII020A reports consist of one child per page listing overdue vaccinations for practice staff to check and follow up. These reports are usually addressed to the principal doctor. If you are registered with ACIR Secure Site, you may access these reports online.

If you require assistance in your practice to follow up these overdue children or Secure Site set up, please phone Sylvia Penhaligon at SPHN on **3290 3733**.

Positions Vacant

- **P/T GP** required – busy, friendly community based women's health centre in Kingston minimum of one day per week. Well equipped room, supported by great staff. Bulkbilling only, hours neg. Please contact Kris Saunders on 3808 9233 or email manager@loganwomen.com.au
- **GP P/T** for comp, accred, DR owned [AON] practice. Hrs & \$\$ neg **Contact** Trudi Hughes on 33412002 gpwanted@live.com.au
- **GP** Required: Bulk Billing Practice in Logan Central. Competitive Percentage, and no after hours work **Contact** Michelle Alexander or Colleen Champney at 07 3412 8333.
- **Southside GP position**. PT/FT Fully computerised accredited practice with established patient base. Replacing retiring Doctor. Full RN support. No after hours. **Contact:** Sue 3299 6777 or 0422316655
- **FT/PT GPs** busy private-owned practice in Waterford West. DWA available. Fully computerised. RN support. **Contact:** 0732996688 or 0401338068
- **GP VR** (part time available) Logan Central **Contact:** Practice Manager on 0400 110 612

For more information regarding these vacancies please visit www.sphn.org.au/general-practitioners

LUCKY PRIZE DRAW for GP Primary Members of SPHN



Join or renew your SouthEast Primary HealthCare Network membership by 26 February 2010 and you could win a ticket to

Simply Versace GP Education Conference

- **Program features:** Mater's leading specialists who will provide information on cutting edge and highly relevant health care developments in Australia.
- **Dates:** 13 and 14 March 2010.
- **The prize package includes:** Saturday night accommodation in a Versace superior room; Buffet breakfast for up to two in Il Barocco Restaurant on Sunday; Meals for delegate: Conference lunch on Saturday and Sunday, Afternoon tea on Saturday, Morning tea on Sunday; Delegate seat at the conference dinner.
- For further information please contact
- Stephanie Culshaw Membership Officer on sculshaw@sphn.org.au or 07 3290 3733



Allied Health Professionals

LIFE Professional Development: evaluating suicide prevention projects

Living Is For Everyone (LIFE) in conjunction with the Australian Psychological Society is hosting free professional development evaluation workshops around Australia in March and April 2010. These day long workshops will introduce and explain the key concepts of evaluation and leave participants with a take-home plan. Anyone working with people at risk of suicide who would like to learn about evaluating projects or improving their current evaluation systems is eligible to attend.



- Where: The Queensland workshop will be held at the Hotel George Williams.
- Date: 20 April approximately 9am-5pm
- Cost: There is no cost to attend and catering for the day will be provided. Spaces are limited, so fill out a registration form and send it to the LIFE team 2 weeks prior to each workshop date
- Registration forms can be downloaded from
- <http://www.livingisforeveryone.com.au/Evaluation-workshops.html>
- Contact: Rhona Rees on 03 8371 2831 or rrees@crisissupport.org.au

Relapse Prevention for Depression: Mindfulness-Based Cognitive Therapy Group Program

This program is for individuals who have suffered with recurrent depression. It will assist in teaching them skills aimed at preventing future episodes of depression and will enable them to catch the tell-tale signs of depression before it starts and know what to do about them. This program is a follow-on to individual psychotherapy.

- **Starting:** March 2010
- **Frequency:** Once a fortnight
- **Where:** The Psych Professionals, Unit B, 2 Gleneagles Ave, Cornubia
- **Time:** TBA (90 minutes in duration)
- **Presenter:** Gaby Hill (Registered Psychologist)
- To reserve your place please ring Carol on **07 3287 9293**
- Places limited to only 10 persons per group
- Medicare Rebates available with a "Group Psychological Therapy" item number

AGPN "Can Do" Program - Managing Mental Health & Substance Use in Primary Care

A six and a half hour 'Can Do' interactive learning and reflective listening educational event.

Program Objectives:

- Provision for general practitioners and allied health professionals to up-skill in mental health, drug and alcohol comorbidity.
- Facilitated education and training covering coordination of care, assessment, care plan development, treatment, referral and review of people with co-occurring mental health and substance use conditions.
- **Date:** Saturday 6th March 2010
- **Venue:** Logan Rd Conferencing & Banqueting Centre, 433 Logan Road, Stones Corner
- **Contact:** Kim Moffat at SPHN on 3290 3733.



Mind The Gap: Physical and Mental Health Comorbidity Education and Training for Primary Health Care

Mind the Gap is a two-hour physical and mental health comorbidities education workshop accredited with the RACGP, the RCNA and the ACRRM.

- Target audience: GPs, practice nurses, and other primary health care professionals involved in the multidisciplinary team
- **Date:** 15 April 2010
- **Time:** 6.30pm – 9.30pm
- **Contact:** Kim Moffatt, Education & Training Coordinator Ph. 3290 3733



SPHN Position Vacant

Psychologist (Six Month Contract)

Terms: Full Time

Role Objective:



Contribute to the delivery of Mental Health education and information to:

1. Youth Aged 10-16 yrs
2. Members of the Aboriginal and Torres Strait Islander communities, and
3. Humanitarian refugees in collaboration with internal and external stakeholders.

More information at

<http://www.sphn.org.au/sphn-vacancies>

enhancing health together

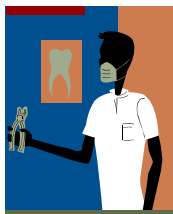




Practice Staff

Dental Item numbers

It has come to the SouthEast Primary HealthCare Network's attention that dentists may be advising their patients that they are eligible for Medicare Benefits Schedule Item numbers 85011 – 87777 and to ask their GP for a *Current Chronic Disease Management Plan* or *Team Care Arrangement*.



- These MBS Schedule Item numbers are available for people with chronic medical conditions, complex care needs on *referral from a General Practitioner*.
- Dentists who believe they have a patient who could benefit from these item numbers and are not sure whether the patient has a *Current Chronic Disease Management Plan* or *Team Care Arrangement* can call Medicare Provider Hotline on 132 150.
- Dentists may want to call or write to the *usual* treating General Practitioner to enquire whether the patient's medical conditions warrant a management plan or team care arrangement.
- It is inappropriate for the referral pathway to work in reverse – ie dentists telling patients that they are eligible for these item numbers before general practitioner involvement.
- If your practice receives a call from a patient or dentist in relation to this matter, you may wish to refer the dentist to www.health.gov.au/internet/mbsonline/publishing.nsf/Content/Medicare-Benefits-Schedule-MBS-1 for the descriptors of this item number.
- For a proforma letter go to <http://www.sphn.org.au/general-practice-programs> then click on **Resources**, then click on **GP Letter to Dentists**



H1N1 and other Vaccine Guidelines Event

H1N1 and other vaccine guidelines event on 3rd March 2010 at 6:30pm at Logan Entertainment Centre. 4 RACGP QA&CPD points will be allocated to attending General Practitioners.

- Gain an understanding of current recommendations for seasonal flu and Panvax administration
- Identify where to source current information and administration of rabies vaccine and rabies immunoglobulin
- Demonstrate current protocols in the management of infection control
- Practices attending receive a FREE Pandemic PPE pack from the Network Registration & 2-course dinner 6:30pm
- **Contact:** Sylvia Penhaligon at SPHN on 3290 3733

Mind The Gap: Physical and Mental Health Comorbidity Education and Training for Primary Health Care

Mind the Gap is a two-hour physical and mental health comorbidities education workshop accredited with the RACGP, the RCNA and the ACRRM.

- Target audience: GPs, practice nurses, and other primary health care professionals involved in the multidisciplinary team
- **Date:** 15 April 2010
- **Time:** 6.30pm – 9.30pm
- **Contact:** Kim Moffatt, Education & Training Coordinator Ph. 32903733

Positions Vacant

- **Receptionists** required urgently for immediate start at a newly established surgery Brisbane southside. Software is Best Practice (similar to PracSoft)
Contact: James 0411 762 182 or hhongnz@yahoo.com
- **Sat Casual Receptionist** required for busy, friendly surgery in Rochedale Sth. MD & PS experience & flexibility to cover sick & hol leave.
Contact Trudi 34233161 / gpwanted@live.com.au
- **RN** required for Non Corporate family practice. Approx 15-20 hours.
Contact Sue on 3299 6777 / 0422 316 655
- **Casual Medical Receptionist** Required: general practice in Waterford West. Experience with computer and MD/Pracsoft preferred.
CV to whzeng67@yahoo.com.au or phone 07 32996688
- **Medical Receptionist** Required: Logan Central
Contact: 3808 8444

Please visit www.sphn.org.au/general-practitioners

enhancing health together



Challenges with patient compliance, adherence
and self-management?

South East Alliance of General Practice & General Practice Queensland
invites you to:

HCA Health Coaching Overview for Health Professionals **Half-day workshop**

Saturday 13th March, 2010

8.00am Registration

8.30am to 1.45pm

Colmslie Hotel

Cnr Wynnum and Junction Roads
MORNINGSIDE



Morning Tea and Lunch will be provided.

Presented by Health Coaching Australia
Facilitator - Rebecca McPhee – Accredited Practicing Dietitian

This half-day workshop will provide you with techniques for:

- Giving treatment advice in a way that lowers patient resistance.
- Motivating patients to take responsibility and want to change.
- Helping patients to be more successful when they do want to change.

Here's what GPs in the program held by GP Victoria had to say:

"Excellent, will make me introduce new techniques into my practice"...

"This has been an invaluable learning experience"...

"One of the best time value presentations I have experienced"

Yes, I would like to attend the **HCA Half-day overview workshop**

Name:..... Position Title:.....

Phone number: ()

Email Address:

Dietary Requirements:.....

In responding to this invitation, I acknowledge that I may incur a financial penalty if I do not attend the event, or if I do not give sufficient notice of cancellation. A minimum of 24 hours notice to cancel is required.

Signature:.....

RSVP Fax to (07) 3823 1408 or email ymcgowan@seagp.org.au by Monday 8th March 2010
For more information please contact Vicki on (07) 3390 2466