

# Wednesday Bulletin

Edition 28 | Page 1 of 3

Wednesday 14<sup>th</sup> July | 2010

## General Practitioners

### Reset Your Life Facilitator Training

Reset Your Life is an accredited Lifestyle Modification Program targeted at people aged 40 to 49 and at high risk of developing Type 2 Diabetes.

- AGPN has developed an online training module for facilitators, which will be provided free to health professionals until 30 November 2010.
- The Australian Government rewards accredited facilitators for the programs they run, by paying subsidies for each patient who enrolls and completes the program. If you are interested in completing this training please complete the attached form and fax back to SouthEast Primary HealthCare Network.

For more information **contact:** Laura Jordan  
Ph: 3290 3733 or e: [ljordan@sphn.org.au](mailto:ljordan@sphn.org.au)

### Health Reform Delivering for Local Communities and Doctors

- The Australian Government is taking action through its National Health and Hospitals Network to expand and enhance medical facilities in communities across Australia.
- *Primary Care Infrastructure Grants* will enable existing general practices to expand or upgrade space for GPs, nurses or allied health professionals to improve care for patients for the community and to support training the next generation of health workers.
- Details of the grant are available by visiting: [www.health.gov.au/tenders](http://www.health.gov.au/tenders)

For more information, please **contact** Denise Upshall at SouthEast Primary HealthCare Network. Ph: 3290 3733

### Accredited Lifestyle Modification Programs – open for referrals!

Patients can now be referred to one of the Lighten Up to a Healthy Lifestyle Program's. The programs run for six months and include individual screenings and seven workshops which cover:

- Increasing everyday physical activity
- Making better food choices
- Reading food labels
- Adapting recipes
- Stress management and problem-solving

Four programs are commencing shortly:

- **19 July** – Mondays, 10:00-12:00pm at Browns Plains Community Health, Wineglass Drive **Hillcrest**
- **28 July** – Wednesdays, 1:00 -3:00pm at Logan Hyperdome Library, 66-70 Mandew Street, **Shailer Park**
- **10 August** – Tuesdays, 6:00-8:00pm at SouthEast Primary HealthCare Network, Wembley Road, **Logan Central**
- **30 August** – Mondays, 2:00-4:00pm at Beenleigh Library, Crete Street, **Beenleigh**

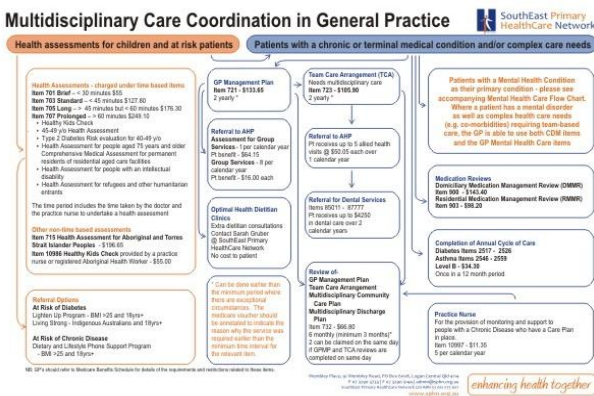
Spots are filling up fast for all of the programs, so keep referring your patients to be in the chance to win a weekend getaway at O'Reilly's Rainforest Retreat.

If you have any questions regarding the program please **contact** Erin at SouthEast Primary HealthCare Network. Ph: 3290 3733

## New Multidisciplinary Care Coordination in General Practice Flow Chart.

New A3 wall charts are available to assist your practice in managing care coordination. They detail all aspects of Health Checks, GP Management Plans, Team Care Arrangements, and Mental Health Care, with referral options in 2 large easy to read wall charts. The file, **Multidisciplinary Care Coordination in General Practice**, is available for download on our website [www.sphn.org.au/general-practice-programs](http://www.sphn.org.au/general-practice-programs) Alternatively; we are able to supply one laminated copy per practice.

If you would like a copy, please **contact** Bralma Hine at SouthEast Primary HealthCare Network.  
Ph: 3290 3733 e: [bhine@sphn.org.au](mailto:bhine@sphn.org.au)



## Partners in Mind Initiative - Gail Symonds

Hi, my name is Gail Symonds; I am the new Primary Care Liaison Officer for Browns Plains District Mental Health. I will be working in partnership with SouthEast Primary HealthCare Network promoting the Partners in Mind Initiative. In the upcoming weeks I will work closely with Kristie Milloy (Area Primary Care Liaison Officer for SouthEast Primary HealthCare Network) addressing issues raised by GP's and advocating for better service integration between public and private sectors. I will be liaising between District Mental Health and GP's facilitating shared care and transition consumers. I look forward to meeting you in the next few weeks.

If you would like to know more about the joint project or mental health services please feel free to **contact** me.

Gail Symonds, Primary Care Liaison Officer, Browns Plains Adult Mental Health.  
Ph: 34123200 EXT 3217 Fax: 34123241.



## Griffith University Primary Health Care Study

Griffith University is currently completing research exploring nutrition care provision in the General Practice setting. The University is looking to recruit GPs, Practice Nurses and Practice Managers for a 20 minute telephone interview exploring your perceptions on this topic. This can be at any time of day or night.

To take part in the interview or for more information **contact** Lauren Ball at Griffith University.

Ph: 5552 7708 e: [Lauren.Ball@griffithuni.edu.au](mailto:Lauren.Ball@griffithuni.edu.au)

## Sleep on the Streets Night

Sleep on the Streets is a non-profit organisation run by a group of concerned Australians looking to make an impact on homelessness in the Gold Coast area. A "sleep on the streets night" is being held on the **24<sup>th</sup> July 2010 at the Runaway Bay Football Club** to raise awareness and money for homeless families and women that have been victims of domestic violence. All proceeds will be donated to the Salvation Army.

For more information visit:

[www.sleeponthestreets.com](http://www.sleeponthestreets.com)



### Hearing Clinics, Queensland Health

Audiometry Screening, Otoscopy and Tympanometry are available for children and teens aged 4-18 years at Community Health Centres across the Metro South District. The service is free and offered at Logan (32908900), Beenleigh (3827 9811), Browns Plains (34123100), Redlands (34884222), Wynnum (33961823) and Cleveland (34884222) Centres. Parents can arrange an appointment by contacting the appropriate centre.

### Queensland Health, Metro South District. Primary School Health Team

A vision and hearing screening service is conducted in Primary Schools across the Logan Beaudesert Region by a visiting Registered Nurse. On the occasions abnormalities are detected. Parents are requested to have further assessment on their child by a GP/Optomist as required. To evaluate the validity of the screening program it is important for the feedback forms supplied to parents to be completed by the Health Professional and posted to the appropriate Health Centre (replied paid, self addressed envelope is supplied). Your co-operation in this matter would be appreciated as it enhances the effectiveness of our service.

### Modern Awards

Copies of relevant Modern Awards are available for your reference on the SouthEast Primary HealthCare Network web site.

- Medical Practitioner Award 2010
- Nurses Award 2010
- Health Professionals and Support Services Award 2010
- Clerks – Private Sector Award 2010

A copy of the National Employment Standard (NES) fact sheet is also available. This document must be provided to all new employees from July 1<sup>st</sup> 2010.

Visit [www.sphn.org.au/general-practice-programs](http://www.sphn.org.au/general-practice-programs) and click on resources to find the documents.

### Successful outcome for recent Mental Health Workshop at Rydges - 26.06.2010!

Thank you to those GP's that recently participated in the Accredited Mental Health Skills Workshop. Your enthusiastic participation saw positive outcomes from this event. For those GP's that were not able to attend and would like to be accredited to claim MBS 2710, please express interest by **contacting** Kristie Milloy at SouthEast Primary HealthCare Network.

Ph: 3290 3733 e: [kmilloy@sphn.org.au](mailto:kmilloy@sphn.org.au)

### Newly renovated consulting room

Available on a full time/session basis at Rochedale Family Practice, ample parking, close public transport, shopping centres. Service facilities can include waiting room, receptionist for appointment system, phone messages and billing. Phone and internet available.

**Contact:** Roslyn Franklin for more details.

Ph: 3341 2022 e: [ros.franklin@optusnet.com.au](mailto:ros.franklin@optusnet.com.au)

### Positions Vacant

- Permanent GP and/or Locum required: for accredited, computerised family practice in Logan Village, 4207 (Full nursing support with chronic disease management) New rating RAA 2 with retention grants from \$2500 per year increasing to \$12000 in fifth and subsequent years. Also grant available for moving from RAA 1 to RAA 2 - \$7500 per annum for two subsequent years. Come and meet the doctors and staff.

For more information:

[www.doctorconnect.gov.au](http://www.doctorconnect.gov.au)

**Contact** Ruth for more details:

Ph: 07 55470222 e: [asmed@bigpond.net.au](mailto:asmed@bigpond.net.au)

- GP Required for DWS: Meadowbrook (Logan)

**Contact:** Joye Preston

Ph: 3200 7699 / 0400 159 101

e: [jpreston@medihealth.com.au](mailto:jpreston@medihealth.com.au)

For further information regarding these vacancies, please visit

[www.sphn.org.au/general-practice-vacancies](http://www.sphn.org.au/general-practice-vacancies)

# Wednesday Bulletin

Edition 28 | Page 1 of 3

Wednesday 14<sup>th</sup> July | 2010

## Practice Staff

### Reset Your Life Facilitator Training

Reset Your Life is an accredited Lifestyle Modification Program targeted at people aged 40 to 49 and at high risk of developing Type 2 Diabetes.

- AGPN has developed an online training module for facilitators, which will be provided free to health professionals until 30 November 2010.
- The Australian Government rewards accredited facilitators for the programs they run, by paying subsidies for each patient who enrolls and completes the program. If you are interested in completing this training please complete the attached form and fax back to SouthEast Primary HealthCare Network.

For more information **contact:** Laura Jordan  
Ph: 3290 3733 or e: [ljordan@sphn.org.au](mailto:ljordan@sphn.org.au)

### Health Reform Delivering for Local Communities and Doctors

- The Australian Government is taking action through its National Health and Hospitals Network to expand and enhance medical facilities in communities across Australia.
- *Primary Care Infrastructure Grants* will enable existing general practices to expand or upgrade space for GPs, nurses or allied health professionals to improve care for patients for the community and to support training the next generation of health workers.
- Details of the grant are available by visiting: [www.health.gov.au/tenders](http://www.health.gov.au/tenders)

For more information, please **contact** Denise Upshall at SouthEast Primary HealthCare Network. Ph: 3290 3733

### Accredited Lifestyle Modification Programs – open for referrals!

Patients can now be referred to one of the Lighten Up to a Healthy Lifestyle Program's. The programs run for six months and include individual screenings and seven workshops which cover:

- Increasing everyday physical activity
- Making better food choices
- Reading food labels
- Adapting recipes
- Stress management and problem-solving

Four programs are commencing shortly:

- **19 July** – Mondays, 10:00-12:00pm at Browns Plains Community Health, Wineglass Drive **Hillcrest**
- **28 July** – Wednesdays, 1:00 -3:00pm at Logan Hyperdome Library, 66-70 Mandew Street, **Shailer Park**
- **10 August** – Tuesdays, 6:00-8:00pm at SouthEast Primary HealthCare Network, Wembley Road, **Logan Central**
- **30 August** – Mondays, 2:00-4:00pm at Beenleigh Library, Crete Street, **Beenleigh**

Spots are filling up fast for all of the programs, so keep referring your patients to be in the chance to win a weekend getaway at O'Reilly's Rainforest Retreat.

If you have any questions regarding the program please **contact** Erin at SouthEast Primary HealthCare Network. Ph: 3290 3733

## New Multidisciplinary Care Coordination in General Practice Flow Chart.

New A3 wall charts are available to assist your practice in managing care coordination. They detail all aspects of Health Checks, GP Management Plans, Team Care Arrangements, and Mental Health Care, with referral options in 2 large easy to read wall charts. The file, **Multidisciplinary Care Coordination in General Practice**, is available for download on our website [www.sphn.org.au/general-practice-programs](http://www.sphn.org.au/general-practice-programs) Alternatively; we are able to supply one laminated copy per practice.

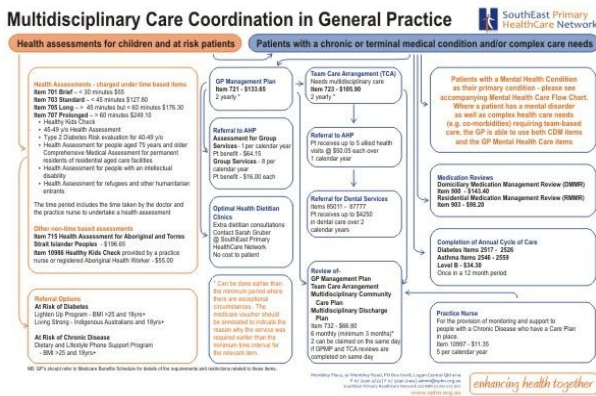
If you would like a copy, please **contact** Bralma Hine at SouthEast Primary HealthCare Network.  
Ph: 3290 3733 e: [bhine@sphn.org.au](mailto:bhine@sphn.org.au)

## Partners in Mind Initiative - Gail Symonds

Hi, my name is Gail Symonds; I am the new Primary Care Liaison Officer for Browns Plains District Mental Health. I will be working in partnership with SouthEast Primary HealthCare Network promoting the Partners in Mind Initiative. In the upcoming weeks I will work closely with Kristie Milloy (Area Primary Care Liaison Officer for SouthEast Primary HealthCare Network) addressing issues raised by GP's and advocating for better service integration between public and private sectors. I will be liaising between District Mental Health and GP's facilitating shared care and transition consumers. I look forward to meeting you in the next few weeks.

If you would like to know more about the joint project or mental health services please feel free to **contact** me.

Gail Symonds, Primary Care Liaison Officer, Browns Plains Adult Mental Health.  
Ph: 34123200 EXT 3217 Fax: 34123241.



## Griffith University Primary Health Care Study

Griffith University is currently completing research exploring nutrition care provision in the General Practice setting. The University is looking to recruit GPs, Practice Nurses and Practice Managers for a 20 minute telephone interview exploring your perceptions on this topic. This can be at any time of day or night.

To take part in the interview or for more information **contact** Lauren Ball at Griffith University.

Ph: 5552 7708 e: [Lauren.Ball@griffithuni.edu.au](mailto:Lauren.Ball@griffithuni.edu.au)

## Sleep on the Streets Night

*Sleep on the Streets* is a non-profit organisation run by a group of concerned Australians looking to make an impact on homelessness in the Gold Coast area. A "sleep on the streets night" is being held on the **24<sup>th</sup> July 2010 at the Runaway Bay Football Club** to raise awareness and money for homeless families and women that have been victims of domestic violence. All proceeds will be donated to the Salvation Army.

For more information visit:

[www.sleeponthestreets.com](http://www.sleeponthestreets.com)



### **Need to work out a catch up vaccination schedule?**

South Australia developed an immunisation calculator to assist practices determine a catch up vaccination schedule for Australian children up to their 7<sup>th</sup> birthday. Enter the child's name, date of birth and state of residence and follow the steps. All you need is the child's immunisation record ready to enter the dates that doses of vaccine were given. The calculator has a stand-alone PC version available for installation and downloads if your system can support it.

Visit the website on

[www.health.sa.gov.au/immunisationcalculator](http://www.health.sa.gov.au/immunisationcalculator)

or connect to the site via SouthEast Primary HealthCare Network's Immunisation link page.

Alternatively you can use the Queensland Health Catch Up Pack for Vaccine Service Providers. If you can't find your pack **contact** Sylvia Penhaligon at SouthEast Primary HealthCare Network.

Ph: 3290 3733.

### **Hearing Clinics, Queensland Health**

Audiometry Screening, Otoscopy and Tympanometry are available for children and teens aged 4-18 years at Community Health Centres across the Metro South District. The service is free and offered at Logan (32908900), Beenleigh (3827 9811), Browns Plains (34123100), Redlands (34884222), Wynnum (33961823) and Cleveland (34884222) Centres. Parents can arrange an appointment by contacting the appropriate centre.

### **Queensland Health, Metro South District. Primary School Health Team**

A vision and hearing screening service is conducted in Primary Schools across the Logan Beaudesert Region by a visiting Registered Nurse. On the occasions abnormalities are detected. Parents are requested to have further assessment on their child by a GP/Optomist as required. To evaluate the validity of the screening program it is important for the feedback forms supplied to parents to be completed by the Health Professional and posted to the appropriate Health Centre (replied paid, self addressed envelope is supplied). Your co-operation in this matter would be appreciated as it enhances the effectiveness of our service.

### **Modern Awards**

Copies of relevant Modern Awards are available for your reference on the SouthEast Primary HealthCare Network web site.

- Medical Practitioner Award 2010
- Nurses Award 2010
- Health Professionals and Support Services Award 2010
- Clerks – Private Sector Award 2010

A copy of the National Employment Standard (NES) fact sheet is also available. This document must be provided to all new employees from July 1<sup>st</sup> 2010.

Visit [www.sphn.org.au/general-practice-programs](http://www.sphn.org.au/general-practice-programs) and click on resources to find the documents.

### **Successful outcome for recent Mental Health Workshop at Rydges - 26.06.2010!**

Thank you to those GP's that recently participated in the Accredited Mental Health Skills Workshop. Your enthusiastic participation saw positive outcomes from this event. For those GP's that were not able to attend and would like to be accredited to claim MBS 2710, please express interest by **contacting** Kristie Milloy at SouthEast Primary HealthCare Network.

Ph: 3290 3733 e: [kmilloy@sphn.org.au](mailto:kmilloy@sphn.org.au).

### **Newly renovated consulting room**

Available on a full time/session basis at Rochedale Family Practice, ample parking, close public transport, shopping centres. Service facilities can include waiting room, receptionist for appointment system, phone messages and billing. Phone and internet available.

**Contact:** Roslyn Franklin for more details.

Ph: 3341 2022 e: [ros.franklin@optusnet.com.au](mailto:ros.franklin@optusnet.com.au)

# Wednesday Bulletin

Edition 28 | Page 1 of 2

Wednesday 14<sup>th</sup> July | 2010

## Allied Health Professionals

### Reset Your Life Facilitator Training

Reset Your Life is an accredited Lifestyle Modification Program targeted at people aged 40 to 49 and at high risk of developing Type 2 Diabetes.

- AGPN has developed an online training module for facilitators, which will be provided free to health professionals until 30 November 2010.
- The Australian Government rewards accredited facilitators for the programs they run, by paying subsidies for each patient who enrolls and completes the program. If you are interested in completing this training please complete the attached form and fax back to SouthEast Primary HealthCare Network.

For more information **contact:** Laura Jordan  
Ph: 3290 3733 or e: [ljordan@sphn.org.au](mailto:ljordan@sphn.org.au)

### Health Reform Delivering for Local Communities and Doctors

- The Australian Government is taking action through its National Health and Hospitals Network to expand and enhance medical facilities in communities across Australia.
- *Primary Care Infrastructure Grants* will enable existing general practices to expand or upgrade space for GPs, nurses or allied health professionals to improve care for patients for the community and to support training the next generation of health workers.
- Details of the grant are available by visiting: [www.health.gov.au/tenders](http://www.health.gov.au/tenders)

For more information, please **contact** Denise Upshall at SouthEast Primary HealthCare Network. Ph: 3290 3733

### Partners in Mind Initiative - Gail Symonds

Hi, my name is Gail Symonds; I am the new Primary Care Liaison Officer for Browns Plains District Mental Health. I will be working in partnership with SouthEast Primary HealthCare Network promoting the Partners in Mind Initiative. In the upcoming weeks I will work closely with Kristie Milloy (Area Primary Care Liaison Officer for SouthEast Primary HealthCare Network) addressing issues raised by GP's and advocating for better service integration between public and private sectors. I will be liaising between District Mental Health and GP's facilitating shared care and transition consumers. I look forward to meeting you in the next few weeks.

If you would like to know more about the joint project or mental health services please feel free to **contact** me.

Gail Symonds, Primary Care Liaison Officer,  
Browns Plains Adult Mental Health.  
Ph: 34123200 EXT 3217 Fax: 34123241.





### **Sleep on the Streets Night**

*Sleep on the Streets* is a non-profit organisation run by a group of concerned Australians looking to make an impact on homelessness in the Gold Coast area. A "sleep on the streets night" is being held on the **24<sup>th</sup> July 2010 at the Runaway Bay Football Club** to raise awareness and money for homeless families and women that have been victims of domestic violence. All proceeds will be donated to the Salvation Army.

For more information visit:

[www.sleeponthestreets.com](http://www.sleeponthestreets.com)

### **Hearing Clinics, Queensland Health**

Audiometry Screening, Otoscopy and Tympanometry are available for children and teens aged 4-18 years at Community Health Centres across the Metro South District. The service is free and offered at Logan (32908900), Beenleigh (3827 9811), Browns Plains (34123100), Redlands (34884222), Wynnum (33961823) and Cleveland (34884222) Centres. Parents can arrange an appointment by contacting the appropriate centre.

### **Queensland Health, Metro South District. Primary School Health Team**

A vision and hearing screening service is conducted in Primary Schools across the Logan Beaudesert Region by a visiting Registered Nurse. On the occasions abnormalities are detected. Parents are requested to have further assessment on their child by a GP/Optomtrist as required. To evaluate the validity of the screening program it is important for the feedback forms supplied to parents to be completed by the Health Professional and posted to the appropriate Health Centre (replied paid, self addressed envelope is supplied). Your co-operation in this matter would be appreciated as it enhances the effectiveness of our service.

### **Modern Awards**

Copies of relevant Modern Awards are available for your reference on the SouthEast Primary HealthCare Network web site.

- Medical Practitioner Award 2010
- Nurses Award 2010
- Health Professionals and Support Services Award 2010
- Clerks – Private Sector Award 2010

A copy of the National Employment Standard (NES) fact sheet is also available. This document must be provided to all new employees from July 1<sup>st</sup> 2010.

Visit [www.sphn.org.au/general-practice-programs](http://www.sphn.org.au/general-practice-programs) and click on resources to find the documents.

### **Newly renovated consulting room**

Available on a full time/session basis at Rochedale Family Practice, ample parking, close public transport, shopping centres. Service facilities can include waiting room, receptionist for appointment system, phone messages and billing. Phone and internet available.

**Contact:** Roslyn Franklin for more details.

Ph: 3341 2022 e: [ros.franklin@optusnet.com.au](mailto:ros.franklin@optusnet.com.au)